



SERVICE PARTS LIST

BULLETIN NO.
54-06-2265

SPECIFY CATALOG NO. AND SERIAL NO. WHEN ORDERING PARTS		REVISED BULLETIN	DATE
Rechargeable Low Profile Magnetic Task Light			Feb. 2024
CATALOG NO.	2013R-20	WIRING INSTRUCTION	
SERIAL NO.	P57A		

EXAMPLE:

00	0
----	---

 Component Parts (Small #)
 Are Included When Ordering
 The Assembly (Large #).

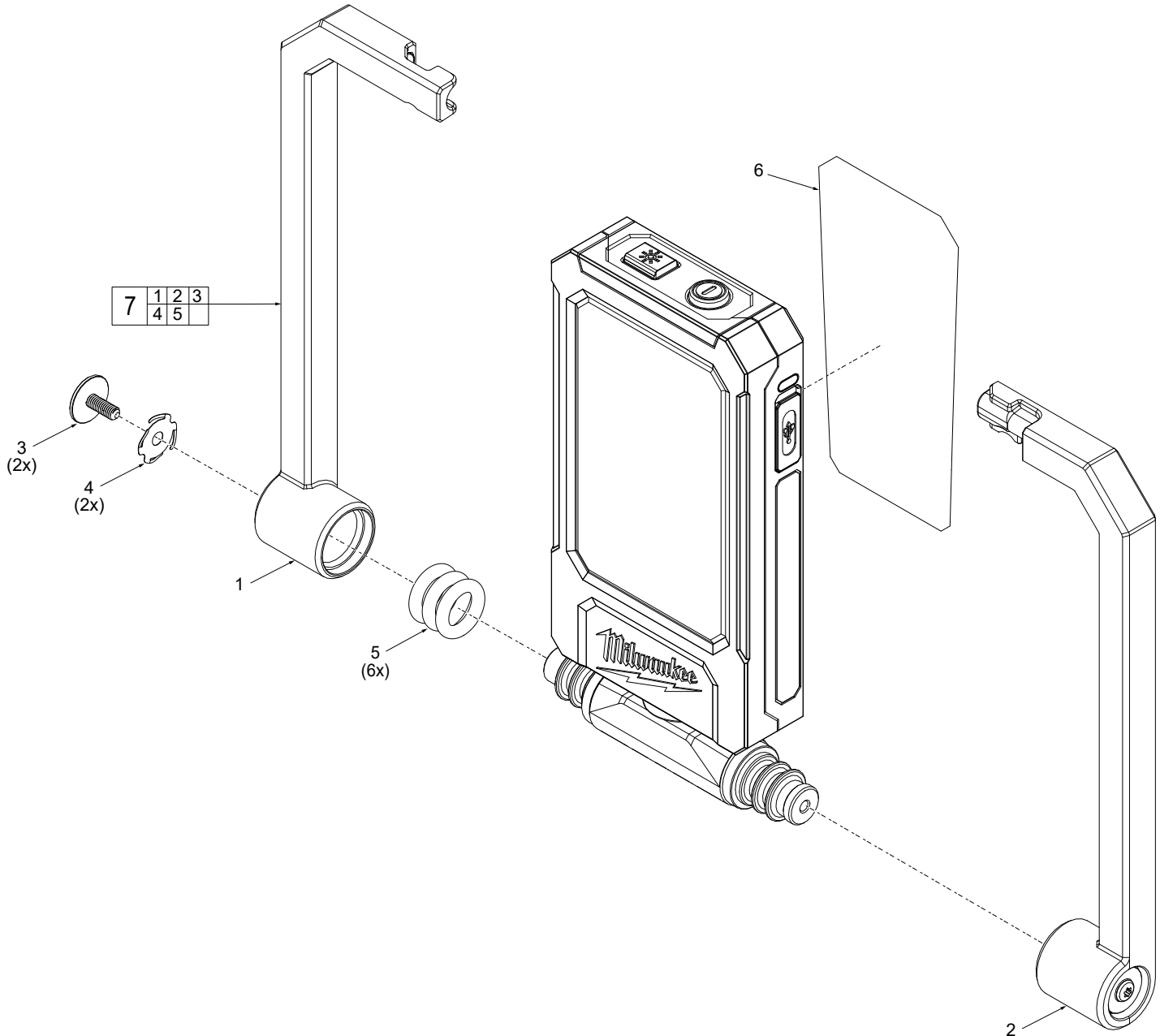


FIG.	PART NO.	DESCRIPTION OF PART	NO. REQ.
1	-----	Left Frame Assembly	(1)
2	-----	Right Frame Assembly	(1)
3	-----	M3 x 8mm Screw	(2)
4	-----	Washer	(2)
5	-----	O-ring	(6)
6	12-20-2008	Service Nameplate	(1)
7	14-46-2013	Frame Service Kit	(1)

FIG. 6 NOTES
 A clean, dry surface is essential for proper performance for any adhesive system. The area intended for application of any adhesive label or nameplate must be prepared by cleaning with isopropyl alcohol. The solvent is to be applied with a clean, lint free applicator and the surface allowed to dry before applying the label or name plate.